



SECTION 3

TEST I SAMPLE CONSTRUCTED-RESPONSE ASSIGNMENTS

This section of the Georgia Assessments for the Certification of Educators® (GACE™) Preparation Guide is designed to assist you in responding to the constructed-response assignments on the test. Included in this section are:

- ▶ Constructed-response assignment directions
- ▶ Sample constructed-response assignments
- ▶ Assignment response sheets
- ▶ An example of a strong response to each sample assignment
- ▶ Scoring criteria that will be used in evaluating your response to each assignment

For each sample assignment, you may want to take the following steps to prepare for the test:

- Review the constructed-response assignment directions.
- Print the assignment and the assignment response sheet.
- Use scrap paper to make notes, write an outline, or otherwise prepare your response.
- Use the assignment response sheet to record your response. The assignment response sheet reflects the amount of space available on an actual test.
- After you complete the assignment, review the sample strong response, your response, and the scoring criteria.

Please note that a periodic table and a set of constants and formulas are provided for this test. Please refer to these materials as needed in responding to the sample test questions and assignments. These materials are located in the Assessment Reference Materials section at the end of this preparation guide.

A scientific calculator may be used for this test as needed in responding to the sample test questions and assignments. Please refer to the current GACE registration bulletin for information about the use of calculators at the test administration.

CONSTRUCTED-RESPONSE ASSIGNMENT DIRECTIONS

A sample of the directions for the constructed-response assignments is shown in the box below.

CONSTRUCTED-RESPONSE ASSIGNMENT DIRECTIONS

For each constructed-response assignment in this section, you are to prepare a written response of up to one page and record it in the area provided on the appropriate Assignment Response Sheet in your answer document.

Read each assignment carefully before you begin to write. Think about how you will organize what you plan to write. You may use any blank space provided in this test booklet following each assignment to make notes, write an outline, or otherwise prepare your response. *However, each of your final responses must be written on the appropriate Assignment Response Sheet in your answer document.*

Your responses will be evaluated based on the following criteria:

- **Purpose:** The extent to which the response fulfills the purpose of the assignment in relation to relevant GACE framework objectives
- **Application of Content Knowledge and Skills:** The extent to which the response accurately and effectively applies content knowledge and skills in relation to relevant GACE framework objectives
- **Supporting Evidence:** The extent to which the response includes appropriate, specific supporting evidence of content knowledge and skills in relation to relevant GACE framework objectives

Evaluation of each response will be based on the criteria above, not on your writing ability. However, your response must be communicated clearly enough to permit a valid judgment of your knowledge and skills. Your responses should be written for an audience of educators in the field.

Your responses should be your original work, written in your own words, and not copied or paraphrased from some other work. Please write legibly. You may not use any reference materials during the test. Remember to review your work and make any changes you think will improve your responses.

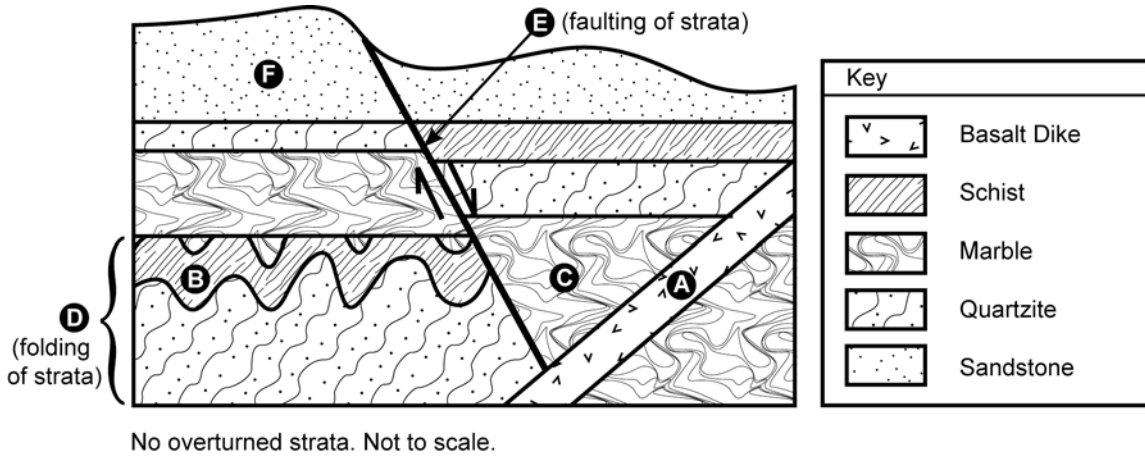
The selected-response section of the answer document containing your name will be removed from your written responses to maintain your anonymity during the scoring process. Do not write your name on any other portion of the answer document, and do not separate any of the sheets from the document.

Please turn the page and begin the constructed-response assignment section of the test.

CONSTRUCTED-RESPONSE ASSIGNMENT ONE

■ Sample Constructed-Response Assignment One

Use the geologic cross section below to complete the assignment that follows.



- Identify the correct sequence of geologic layers and events from oldest to most recent, using the letters provided on the cross section (not all events or layers are labeled); and
- explain the formation of the folded strata depicted in the cross section and describe the processes typically involved in the folding of geologic strata.

Strong Response to Sample Constructed-Response Assignment One

The correct sequence of oldest to youngest layers in the diagram is:

B, D, C, F, E A.

The part of the cross section labeled D represents folded strata. These strata were once deposited as sediments that typically are found in coastal marine environments, such as beaches (sand), shallow seas (lime mud), and offshore trenches (low-oxygen mud). Buried by more sediment, the deposits slowly became the sedimentary rocks sandstone, limestone, and shale. Over time, these sedimentary rocks were heated and changed into layers of different types of metamorphic rock; shale became schist, sandstone became quartzite, and limestone became marble. The folding of these strata indicates that they were compressed by horizontal forces following their deposition. The compression was likely caused by the collision of tectonic plates, an event that is often involved in episodes of mountain building and volcanism. The folding would typically have occurred over long periods of time at great depth, where the high heat and pressure would have allowed them to fold without fracturing. The basalt dike that crosses the strata and the fault that offset the layers indicate that the area was still tectonically active following the metamorphosis and folding of the strata.

CONSTRUCTED-RESPONSE ASSIGNMENT TWO

■ Sample Constructed-Response Assignment Two

Use the information below to complete the assignment that follows.

The specific environmental conditions in a region have a major influence on the types of ecosystems that can exist there. The estuary ecosystem of the coastal United States is an example of an ecosystem that is influenced by the physical environment.

- Identify one defining physical characteristic of an estuary ecosystem of the coastal United States; and
- explain how the physical characteristic you have identified affects the organisms that live there.

■ Assignment Response Sheet for Sample Constructed-Response Assignment Two

A large rectangular box containing 25 horizontal lines for writing a response.

END OF ASSIGNMENT

■ Strong Response to Sample Constructed-Response Assignment Two

An estuary is any partly enclosed coastal body of water where fresh water mixes with seawater. The circulation in an estuary creates a unique environment that traps plant nutrients and stimulates the growth of a variety of salt-tolerant plant species. This occurs, for example, where a river empties into a bay or harbor. This produces a unique body of water that is protected from strong ocean currents and the force of ocean waves. The salinity of estuary water fluctuates as tides rise and fall, but it is generally lower than seawater.

The nutrient-rich environment within an estuary promotes plant growth, which in turn forms the basis of a complex food chain, involving many marine species, as well as a variety of birds and other consumers. The protected estuary environment and the abundance of nutrients and vegetation provide a nursery for many types of commercially valuable fish and shellfish, such as crab and shrimp. Many of the young animals that feed and grow in estuaries migrate to the sea to mature and then return to reproduce. Ducks, herons, cranes, and shorebirds also rely on estuaries for nesting, feeding, and resting during migrations. This boundary between marine and freshwater environments is one of the more biologically productive environments on the earth.

CRITERIA FOR SCORING YOUR RESPONSE

Each response will be evaluated based on the following criteria.

| | |
|--|---|
| PURPOSE | The extent to which the response fulfills the purpose of the assignment in relation to relevant GACE framework objectives |
| APPLICATION OF CONTENT KNOWLEDGE AND SKILLS | The extent to which the response accurately and effectively applies content knowledge and skills in relation to relevant GACE framework objectives |
| SUPPORTING EVIDENCE | The extent to which the response includes appropriate, specific supporting evidence of content knowledge and skills in relation to relevant GACE framework objectives |

Each response is rated on a three-point scale. The three score points of the score scale correspond to varying degrees of performance that are related to the above criteria.

| Score | Description |
|--------------|--|
| 3 | <p>The "3" response reflects thorough understanding of relevant content knowledge and skills as defined in relevant GACE framework objectives.</p> <ul style="list-style-type: none"> • The response fully achieves the purpose of the assignment. • The response demonstrates an accurate and effective application of relevant content knowledge and skills. • The response provides appropriate, specific supporting evidence of relevant content knowledge and skills. |
| 2 | <p>The "2" response reflects general understanding of relevant content knowledge and skills as defined in relevant GACE framework objectives.</p> <ul style="list-style-type: none"> • The response largely achieves the purpose of the assignment. • The response demonstrates a generally accurate, generally effective application of relevant content knowledge and skills. • The response provides some appropriate and general supporting evidence of relevant content knowledge and skills. |
| 1 | <p>The "1" response reflects limited or no understanding of relevant content knowledge and skills as defined in relevant GACE framework objectives.</p> <ul style="list-style-type: none"> • The response partially achieves or fails to achieve the purpose of the assignment. • The response demonstrates limited, inaccurate, and/or ineffective application of relevant content knowledge and skills. • The response provides limited or no appropriate, specific supporting evidence of relevant content knowledge and skills. |

Please note: A response that is unrelated to the assigned topic, illegible, not primarily in the target language, or lacking a sufficient amount of original work to score will be considered **unscorable**. If there is no response to the assignment, then the response will be considered **blank**.