



SECTION 2

TEST I SAMPLE QUESTIONS

This section of the Georgia Assessments for the Certification of Educators® (GACE™) Preparation Guide provides sample selected-response questions with an annotated answer key for you to review as part of your preparation for the test. The sample selected-response questions are designed to illustrate the nature of the test questions. Work through the questions carefully before referring to the annotated answer key, which follows the sample selected-response questions. The answer key provides the correct response to each question, describes why each correct response is the best answer, and lists the objective within the test framework to which each question is linked.

QUESTIONS

1. Use the information below to answer the question that follows.



A kindergarten student gives his teacher the picture above that he has drawn. He tells the teacher, "It says, 'This is my grandpa and me.'" Which of the following statements best describes the student's level of literacy development, as evidenced by this sample?

- A. He recognizes that letters represent spoken sounds.
- B. He understands that the sounds of a word can be separated.
- C. He understands that sentences are made up of words.
- D. He recognizes that words may have more than one syllable.

2. Which of the following sentences contains an error that would be detected by the spell-checker in most word-processing software programs?

- A. Make a rite turn onto West Street and a left onto King Drive.
- B. Try not to loose your money on the way to the store.
- C. Each of these handmade sweaters has it's own unique design.
- D. Everyone who finishes the race will recieve a prize.

3. **Read the passage below; then answer the question that follows.**

I was His Majesty's secretary for twelve long years, and in all that time I cannot remember a single time when he actually looked me in the eye while he was talking to me. I have to admit I never liked him, king or no king. He was chilly, aloof, and often downright rude. But then, he never liked me either. Still, we managed somehow to work together in spite of it.

The style and content of the passage above indicate that it is most likely excerpted from:

- A. a news article.
- B. an autobiography.
- C. a history textbook.
- D. an editorial.

4. **Read the sentence below; then answer the question that follows.**

When the students were finished taking the test, they wrote their names on their answer sheets and handed it in to the teacher.

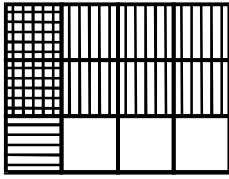
Which of the following underlined words in the sentence above requires a revision to correct a grammatical error?

- A. Change *they* to *he or she*.
- B. Change *names* to *name*.
- C. Change *handed* to *handing*.
- D. Change *it* to *them*.

5. Visual aids are likely to contribute most significantly to an informative speech if they:
- A. use bright colors and bold designs to capture the audience's imagination.
 - B. provide a balanced mixture of text and graphics to the entire audience.
 - C. offer material that can be seen and read clearly by the entire audience.
 - D. feature images and photographs that appeal to the audience's emotions.

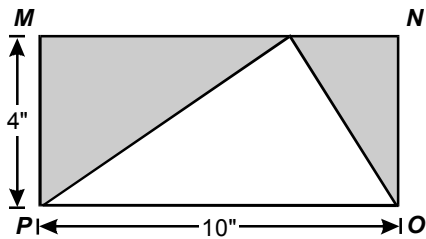
Section 2: Test I Sample Questions

6. Use the diagram below to answer the question that follows.



Which of the following number sentences is represented by the diagram above?

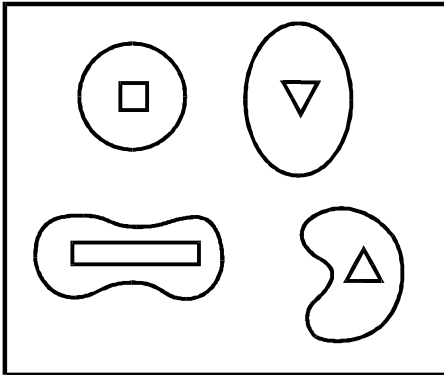
- A. $\frac{3}{4} \times \frac{2}{3} = \frac{6}{12}$
 - B. $\frac{2}{3} \times \frac{1}{2} = \frac{2}{6}$
 - C. $\frac{3}{4} \times \frac{1}{3} = \frac{3}{12}$
 - D. $\frac{2}{3} \times \frac{1}{4} = \frac{2}{12}$
7. Use the figure below to answer the question that follows.



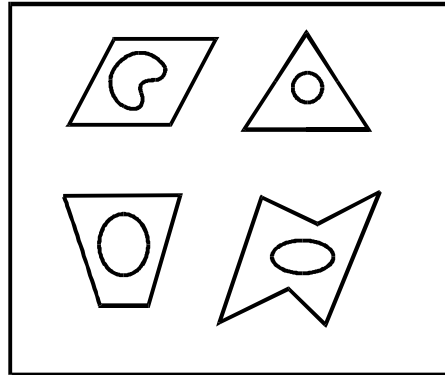
What is the area of the shaded region in the rectangle $MNOP$ above?

- A. 32 in²
 - B. 24 in²
 - C. 20 in²
 - D. 16 in²
- 2-4 Georgia Assessments for the Certification of Educators
Early Childhood Special Education General Curriculum Preparation Guide

8. Use the diagrams below to answer the question that follows.



Group 1



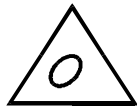
Group 2

According to the diagrams above, which of the following belongs in Group 1?

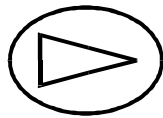
A.



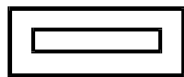
B.



C.



D.



Section 2: Test I Sample Questions

9. Use the data set below to answer the question that follows.

775, 625, 660, 575, 625

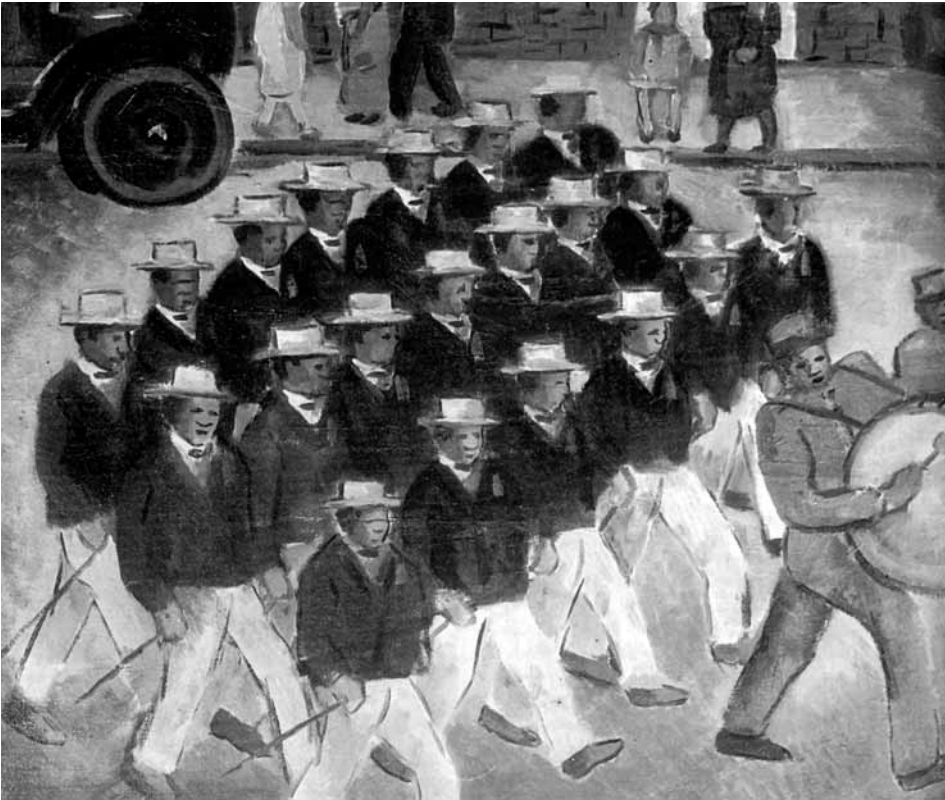
What is the range of the data above?

- A. 200
 - B. 225
 - C. 625
 - D. 652
10. The chromosomes of plants and animals are concentrated in which of the following parts of a cell?
- A. chloroplast
 - B. cytoplasm
 - C. nucleus
 - D. mitochondria

11. A fisherman notices that the barometer in his onboard weather station has recorded a significant drop in atmospheric pressure over the course of several hours. This change in atmospheric pressure most likely indicates that:
- A. fair weather will dominate the region for the next several days.
 - B. a developing storm system in the area is intensifying rapidly.
 - C. cool, partly cloudy conditions will move into the area shortly.
 - D. a warm front will pass through the region within the next day.
12. The emergence of the Cold War between the Union of Soviet Socialist Republics (USSR) and the United States was a direct result of events related to which of the following?
- A. the crash of the U.S. stock market
 - B. world political climate following World War II
 - C. world political climate following the Vietnam War
 - D. the creation of the European Union
13. Which of the following was established by the amendments to the U.S. Constitution known as the Bill of Rights?
- A. Slavery shall not exist within the United States.
 - B. The federal government can collect taxes on personal income.
 - C. People shall not be subjected to cruel and unusual punishment.
 - D. The federal government will protect every state against invasion.
14. Shana and Eli are 10-year-old children who play on different teams in a soccer league. Whenever Shana's team loses, Eli teases Shana about her team's poor performance. Shana is becoming increasingly upset at the teasing. Which of the following strategies should Shana try *first* when attempting to resolve the situation?
- A. teasing Eli when his team loses so that he will understand how upsetting the teasing can be
 - B. using a respectful tone to talk to the coach of Eli's soccer team about Eli's behavior
 - C. finding a friend to confide in about how much Eli's behavior bothers her
 - D. talking to Eli in an assertive manner about how upset she is by the teasing

Section 2: Test I Sample Questions

15. Use the reproduction below of *Marching Elks* (ca. 1933) by Malvin Grey Johnson to answer the question that follows.



Which of the following contributes most strongly to the sense of rhythm in the painting above?

- A. the visible brush strokes in the background areas
- B. the repetition of the marchers' costumes and body positions
- C. the diagonal placement of the group of marchers
- D. the simplification of the forms of the people being depicted

■ Acknowledgments

Question Number	Copyright Information
15	Johnson, Malvin Gray. "Marching Elks" (ca. 1933). Present location unknown. Photo: National Archives. As appears in <i>A History of African-American Artists</i> , Bearden, Romare and Henderson, Harry (1993), p. 182. Reprinted with permission.

ANNOTATED ANSWER KEY

For question	The correct response is	Reason	Test Objective
1	A	The student has matched the spoken sounds of words with letters (e.g., G and P for Grandpa) in the caption for the drawing. The phonemic representation in the writing is not complete and at this point, the student does not demonstrate an understanding of the concept of words.	0001
2	D	According to the spelling rule that states, "I before E except after C," the word <i>receive</i> is spelled incorrectly.	0002
3	B	The passage is an informal, historical account written in the first person and it reflects the thoughts and feelings of the author about a relationship with a particular individual.	0003
4	D	The singular pronoun <i>it</i> refers to the <i>answer sheets</i> , a plural noun. For the sentence to be grammatically correct, the plural pronoun <i>them</i> must replace <i>it</i> .	0004
5	C	The purpose of visual aids in an informative speech is to clarify and support the material being presented orally. With a suitable design for the visual aids and an appropriate presentation method, the entire audience can receive the maximum benefit from the oral and the visual materials.	0005
6	D	The rectangle represents 1. The region with the vertical hatching represents $\frac{2}{3}$. The region with the horizontal hatching represents $\frac{1}{4}$. The area where the shaded portions overlap represents $\frac{2}{3} \times \frac{1}{4}$ which equals $\frac{2}{12}$.	0006
7	C	The area of rectangle <i>MNOP</i> can be determined by multiplying the length by the width, $10 \times 4 = 40$. The area of the unshaded triangle can be computed as one half the length of the base times the height, $5 \times 4 = 20$. The area of the shaded region can be computed by subtracting the area of the unshaded region from the total area of the rectangle, $40 - 20 = 20 \text{ in}^2$.	0007
8	C	Each of the shapes in Group I contain a polygon enclosed in a curved exterior. The shape in response C has the same characteristics.	0008

Section 2: Test I Sample Questions

For question	The correct response is	Reason	Test Objective
9	A	The range of a set of data is the difference between the largest value and the smallest value. The largest value in this data set is 775. The smallest value is 575. The difference between the two is 200.	0009
10	C	The nucleus controls and regulates activities of the cell. The nucleus contains the greatest concentration of hereditary information in the cell.	0010
11	B	Low-pressure systems are associated with clouds and precipitation. A significant change in barometric pressure over the course of several hours indicates that the weather system is developing rapidly.	0011
12	B	Following World War II, tension grew between the United States and the Soviet Union over the structure of the postwar world. The United States and its allies sought an international system of democracy with a capitalist economy. These nations opposed the Soviet Union and its allies who supported communism as a form of government and as an economic system.	0012
13	C	The first ten amendments of the United States Constitution are known as the Bill of Rights. The Eighth Amendment protects against excessive bail fines as well as cruel and unusual punishment.	0013
14	D	The first step in conflict resolution is to communicate directly about the problem. Shana's strategy to talk with Eli about how his behavior is upsetting her is appropriate because she can state how she feels without blaming or insulting him.	0014
15	B	In art, rhythm established by the repetition of elements or forms. In this painting, the artist uses the repetition of marchers, in both their steps and their clothing, to create a sense of rhythm.	0015